



*Leading The Pack*

**WOLF**  
TECHNOLOGY GROUP

# Network Cabling Audits

*Documentation Counts*



## Comprehensive Network Cabling Audits

Network downtime can have a significant impact on your business. Poor network cabling design, configuration and installation can lead to problems that affect your daily operations. Items such as poor data flow rates, dropped packets, severe network disruption and QoS violations are symptoms of a poorly implemented cabling infrastructure.

At Wolf Technology Group, our certified experts will identify improvements necessary for stability, efficiency and maintainability of your network infrastructure, as well as identifying any new knowledge gaps that arise as part of your system growth.

By working with you to establish a performance baseline for your network and providing a detailed gap analysis to help you improve performance and stability, we will ensure your business can address any shortcomings in the design, implementation, operations and management of your network infrastructure. The outcome of the audit will be fully documented in a report including all of the findings with best practice recommendations designed to ensure your network cabling meets your business needs.

## Why Get a Cable Audit?

- Gaining valuable insight into your cabling infrastructure
- Are your site plans and patching schedules up to date?
- Do you know what specification of cabling you have installed currently and is it labeled properly?
- Are you having erratic network problems on site?
- Is your cabling sufficient to support maximum network switch throughput

## Site Audits Can Be Undertaken To:

- Update site plans with latest outlet IDs, locations and cable pathways
- Provide test results of the cabling infrastructure to identify potential faults and anomalies
- Re-certification of cabling to meet BICSI and EIA/TIA standards
- Provide detailed recommendations to correct identified problems
- Update or produce patching plans & color coding
- Update rack elevations of all computer rooms, or riser closets, as well as cabling floor plans
- Provide standards and best practices documentation for any future installation or additions

**Wolf Technology Group**

Portland, ME | Bangor, ME

wolftechgroup.com

800.444.8095



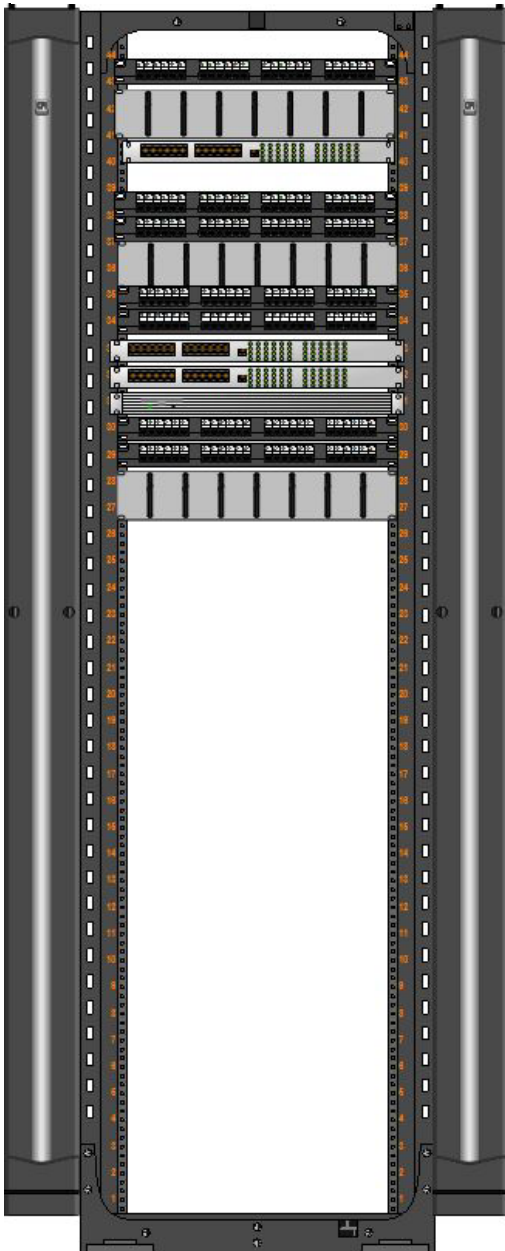
Leading The Pack

# WOLF

TECHNOLOGY GROUP

# Network Cabling Audit As Built Documents

## Rack Elevation Diagrams



## Color Coding



Leading The Pack  
**WOLF**  
TECHNOLOGY GROUP

### COLOR CODE MANAGEMENT



WAN / INTERNET



DMZ



INTER - SWITCH  
SWITCH TO ROUTER



SERVER TO  
SWITCH



MANAGEMENT



ISCSI  
CONNECTIONS



USER  
ENDPOINTS



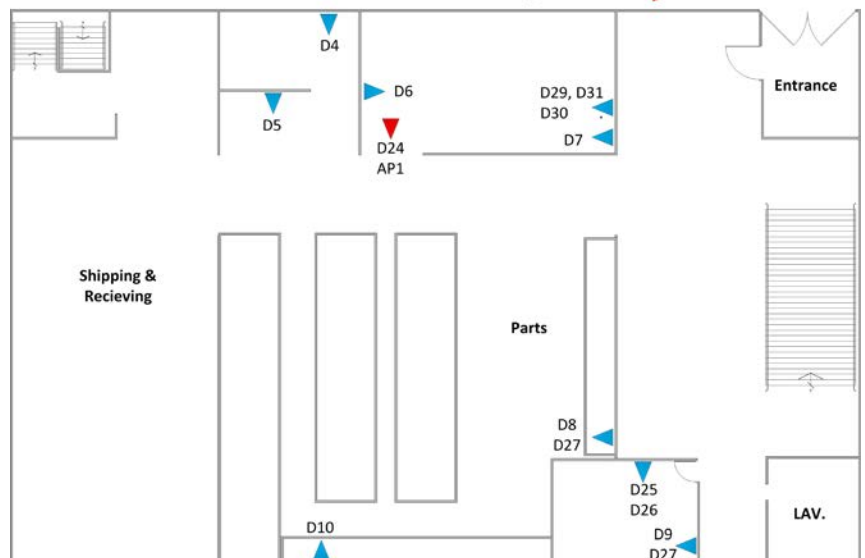
WIRELESS  
DEVICES



ALL OTHER  
DEVICES

## Cable Map

▶ = Data Jack    ▶ = Wireless Access Point



To learn more about our network cabling service, please contact us at  
[sales@wolftechgroup.com](mailto:sales@wolftechgroup.com) or @ 207.772.4212  
You'll be glad you did.